

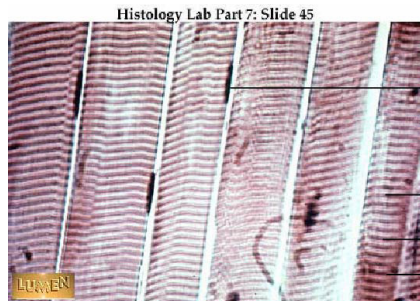
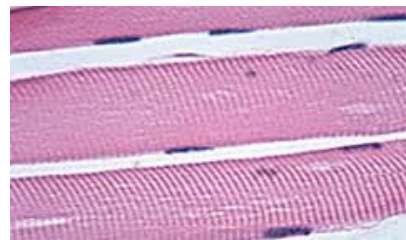
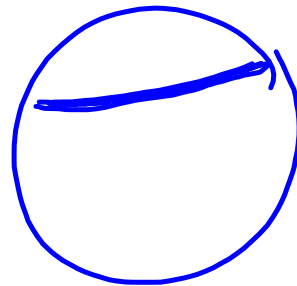
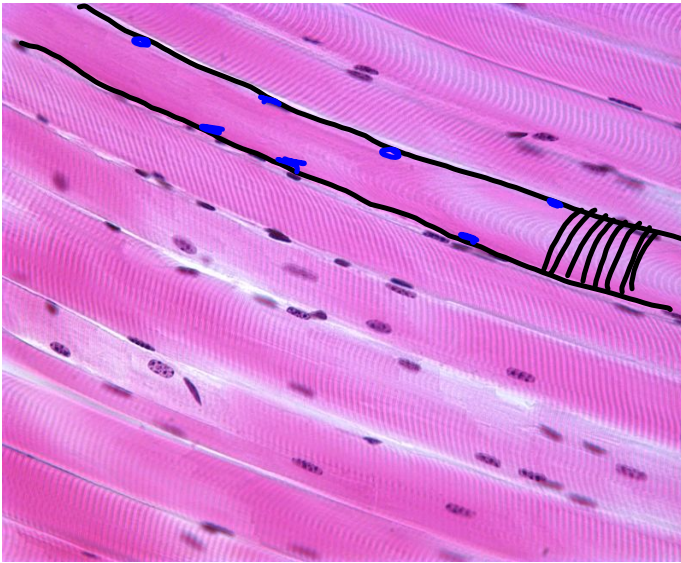
## Skeletal Muscle

Location:

- attached to bone

Function:

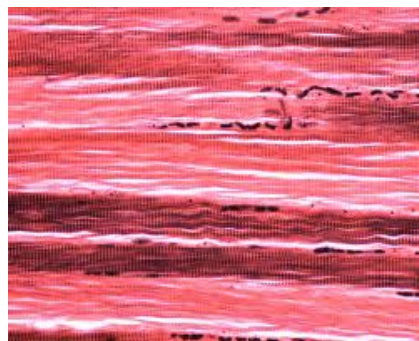
- voluntary movement



Nucleus. (Each cell is quite long and is multinucleated.)

Striations

Skeletal Muscle: Striated. Endomysium covers each muscle fiber (cell). Perimysium covers bundles of fibers and Epimysium is a connective sheath that surrounds an entire muscle.



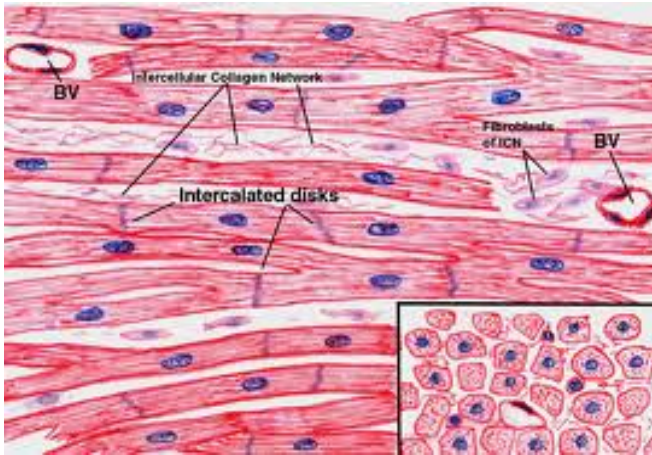
## Cardiac Muscle

Location:

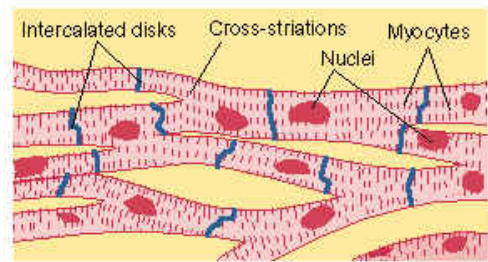
- heart

Function:

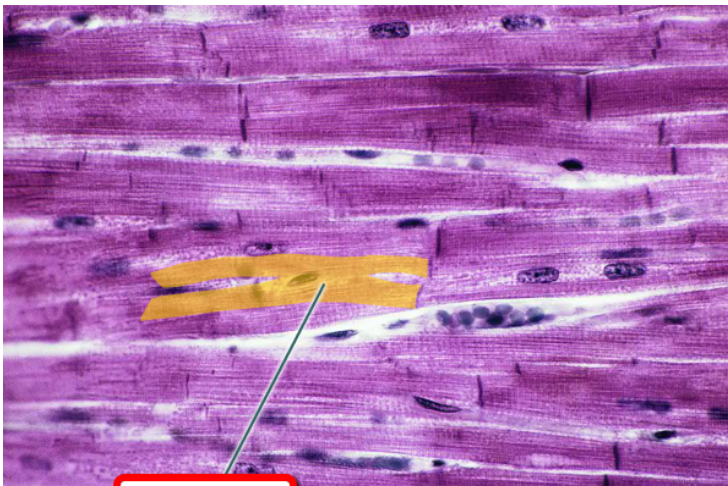
- pump blood through body



- branching fibers
- nucleus in center of cell.
- intercalated disks separate cells.



Cardiac muscle



name it

## Smooth Muscle

### Location:

- lining of digestive organs
- lining of arteries
- uterus
- urinary bladder

### Function:

- involuntary movement of food through digestive organs
- helps flow of blood.

