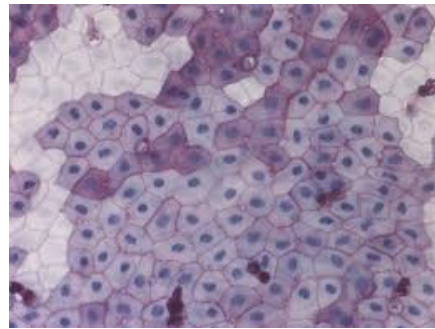
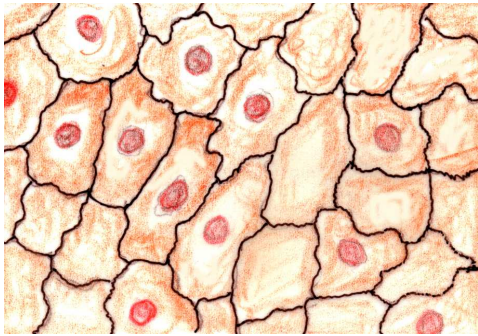


Squamous Epithelium

- Locations :
- air sacs of lungs
 - lining blood vessels
 - outer layer of skin
 - lining body cavities

- Functions :
- Diffusion (exchange of gases)
 - reduce friction
 - absorption
 - protection



Columnar Epithelium

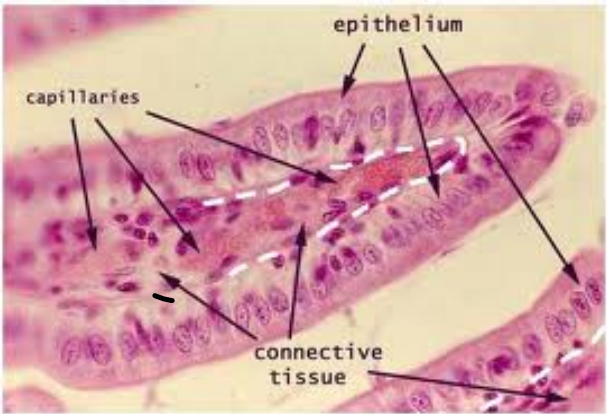
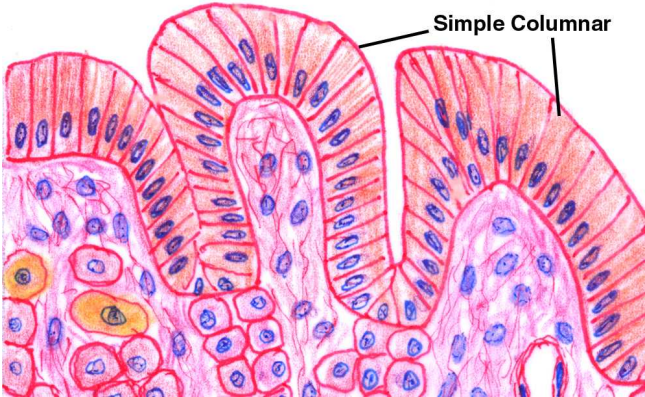
Locations:

- lining of small intestine
- lining of stomach
- lining of respiratory passage
- lining of uterus

Functions:

- absorption
- secretion
- protection
- filtration





Cuboidal Epithelium

• Location:

- linings of kidney tubules *
- lining of ovary
- glands *
- pancreas

Function:

- filtration
- secretion
- protection

